

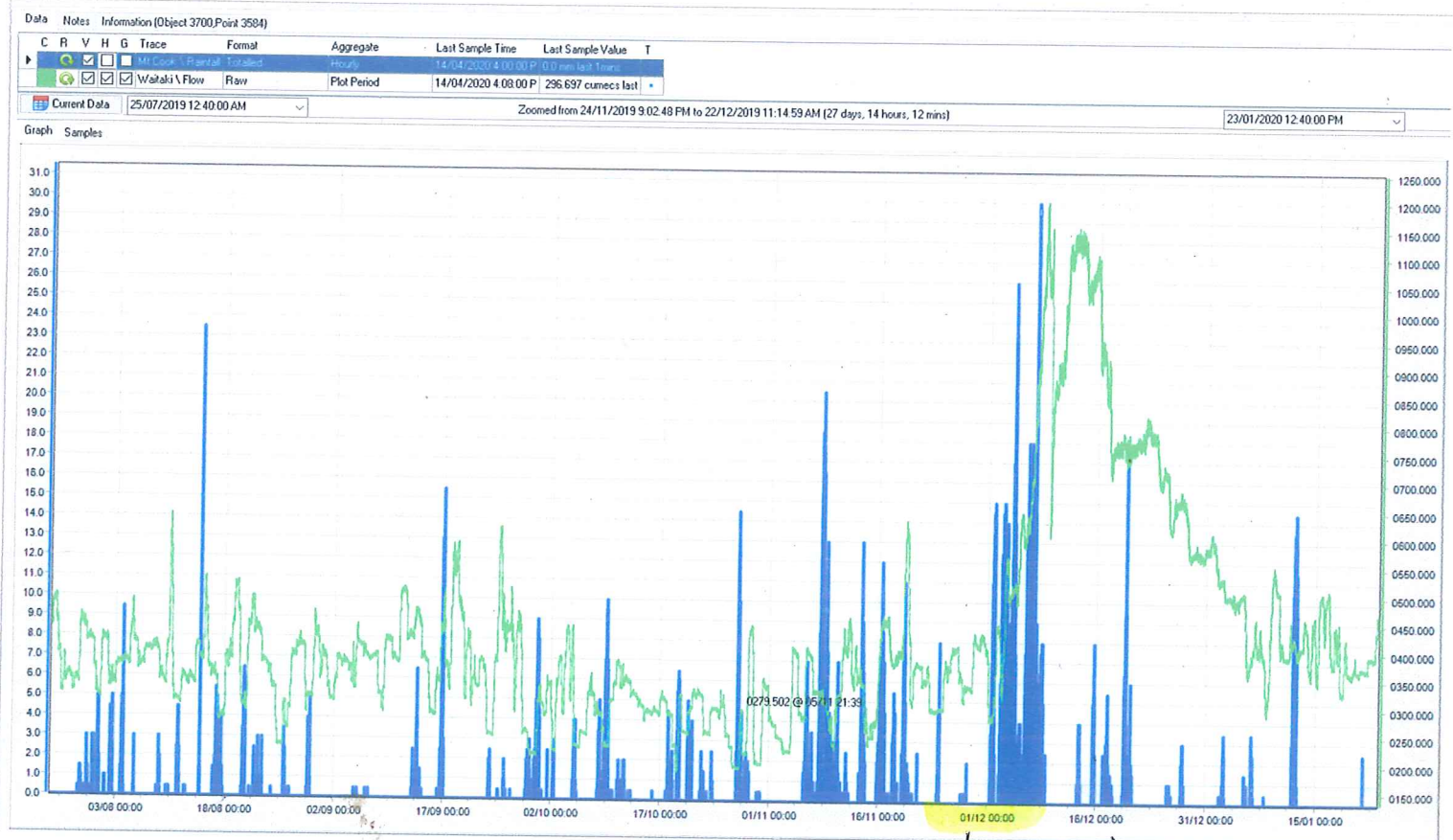
Lower Waitaki December 2019 Flood Update

8 June 2020 – Environment Canterbury South Canterbury River Engineering

A further update of the Lower Waitaki River as of June 2020.

The graph below show there has been almost continuous, above average flows since December 2019 with a two week period of levels above 1000. The very high flows caused substantial damage throughout the river system at a number of locations and the now decreasing flows have exploited these. There are currently 11 known sites that the river has affected.

This event was caused by the same rainfall that caused the Rangitata to flood. The graph below shows the rainfall and subsequent river rise flowing high rainfall. The rainfall (blue) is from a gauge at Mt Cook. It should be noted that the catchment for the Waitaki River includes the lakes and the issue associated with this event is the hydro lakes were already full at the time thus any increase in rainfall had to be spilled as no buffer /storage was available. At times spilling could not occur fast enough to mitigate the incoming rainfall. This rainfall/spill continued well into February. The total rainfall from the 2nd December 2019 to the 9th December 2019 was 1053mm.



Blue: MtCook Rainfall
Green: Waitaki Flow

1-12-19 31-12-19₁

23/01/2020 12:40:00 PM

Zoomed from 24/11/2019 9:02:48 PM to 22/12/2019 11:14:59 AM (27 days, 14 hours, 12 mins)

