

Electricity Authority weekly security of supply report 3 April 2025

Key points

National average spot price between 27 March-2 April 2025 was \$349/MWh (an increase of \$66/MWh compared to last week), with most prices between \$303/MWh-\$399/MWh.

Higher prices are due to low hydro storage, low wind generation, only having one Rankine available until Wednesday, and TCC going on outage on Tuesday.

Demand was highest on Wednesday, reaching a maximum of 2.61GWh at 8am.

National controlled hydro storage continues to decrease. As of 1 April, controlled hydro storage was ~60% nominally full and ~76% of historic mean. The electricity risk curves were last updated on 26 March.

S9(2)(b)(ii)

The amount of **generation on outage** between 27 March-2 April was mostly close to average for this time of year and above average on Monday and Tuesday. The generation on outage next week is expected to be close to average.

^This information is confidential and potentially commercially sensitive.

Figure 1: Wholesale spot prices at Ōtāhuhu and Benmore

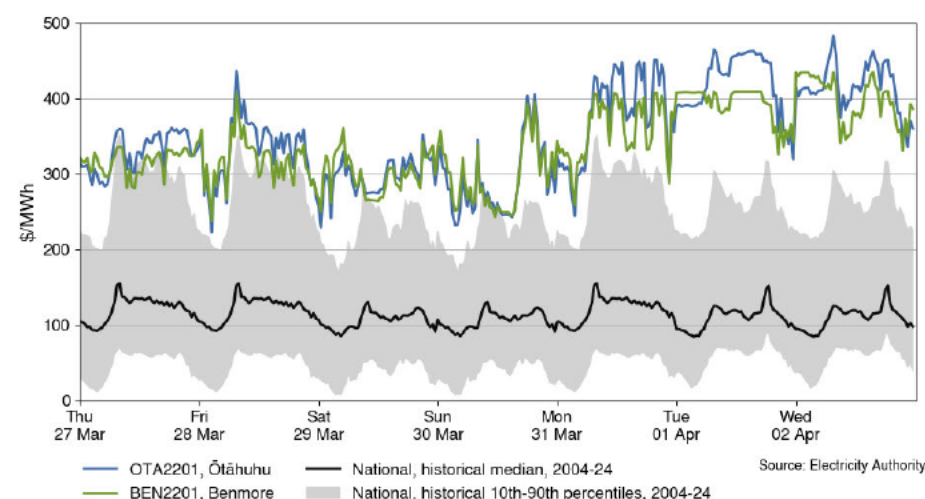


Figure 2: Hydro storage and electricity risk curves

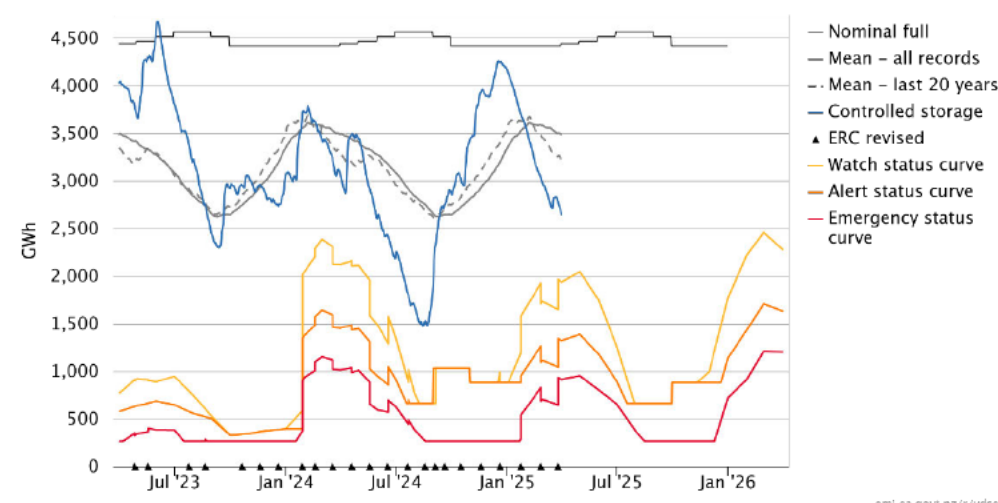
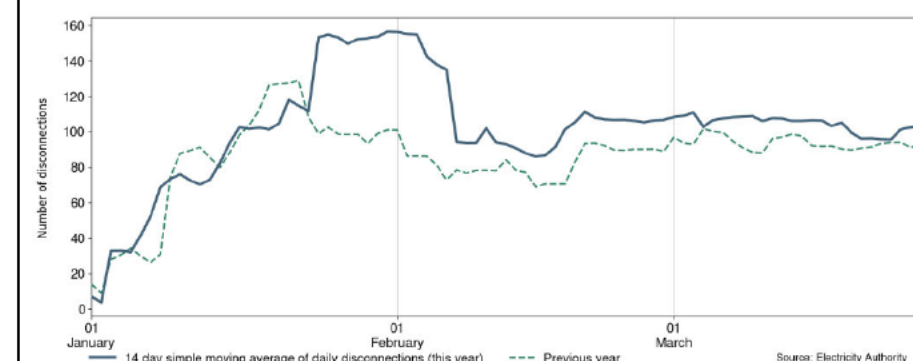


Figure 4: Disconnection trends for unique ICPS, 14-day moving average, 2024 and 2025



The **number of disconnections** this year has been similar to or higher than in 2024. The 14-day average for 28 March (the most recent data available for 2025) was 102 disconnections.

Figure 3: Generation by type on outage

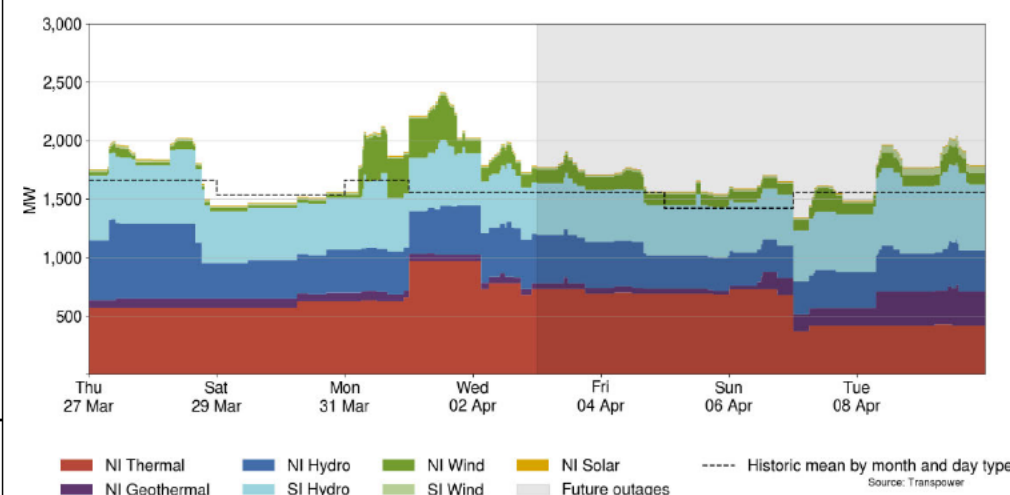


Table 1: Notable planned outages (active 3-10 April 2025)

Plant	MW Loss	Start	End
TCC	310	01-Apr-25	06-Apr-25
Huntly 1	240	17-Mar-25	02-Jun-25
Tokaanu	240	10-Apr-25	10-Apr-25
Tauhara	177	08-Apr-25	11-Apr-25
Manapōuri Unit 2	128	24-Mar-25	17-Apr-25
Manapōuri Unit 4	128	04-Jan-25	12-Jun-26
Clyde Unit 1	116	14-Jan-25	23-May-25

Figure 5: Number of consumer switches between retailers, February 2025

		Switched To									
		Mercury 5.9k	Contact Energy 5.7k	Genesis Energy 4.3k	Meridian Energy 3.4k	Powershop 3.1k	Switch 1.4k	Pulse Energy Alliance 1.3k	Frank Energy 1.1k	Nova Energy 1.0k	Electric Kiwi 859
Switched From	Mercury 5.9k		1577	1229	709	725	332	261	255	230	193
	Contact Energy 5.7k	1565		1051	817	744	305	240	218	216	174
	Genesis Energy 4.3k	1126	1029		713	425	197	120	152	160	103
	Frank Energy 2.9k	471	479	1187	137	203	82	83		91	54
	Meridian Energy 2.3k	508	556	386		245	105	100	84	59	63
	Powershop 2.2k	517	512	361	212		122	89	97	69	80
	Switch 1.5k	409	350	191	107	136		107	48	35	53
	Electric Kiwi 1.2k	222	256	157	87	153	70	59	55	25	
	Nova Energy 1.1k	245	188	201	104	110	44	122	43		21
	Pulse Energy Alliance 1.1k	263	228	167	84	107	43		36	32	24

The 10 retailers with the most consumer switches are shown, with the old retailer on the left and the new retailer on the top. It shows competition in action as retailers gain and lose customers to each other. The highest number of switches between two retailers in March was 1,577 from Mercury to Contact Energy, followed by 1,565 switches from Contact Energy to Mercury. The **total number of switches** in March 2025 was 30,978.